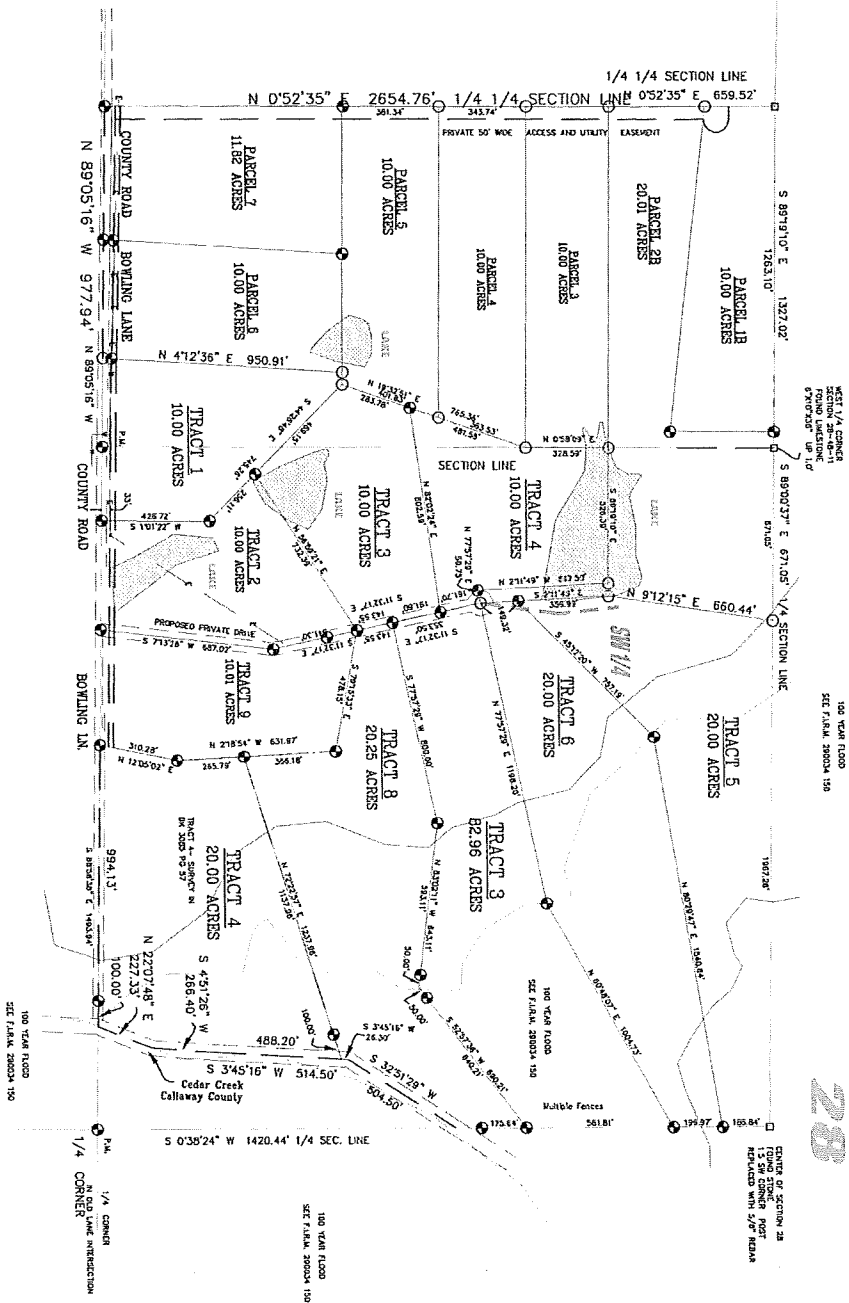


CEDAR CREEK POINT

BOONE COUNTY, MISSOURI



28



FEB. 12, 2009


 THIS IS A PROPOSED PLAT
 FOR THE PARTIAL
 SECTION 28
 TOWNSHIP 35 N.
 RANGE 20 E.
 BOONE COUNTY,
 MISSOURI